

# Sydney Children's Hospital Stage 1 and Minderoo Children's Comprehensive Cancer Centre

RANDWICK HEALTH & INNOVATION PRECINCT  
HIGH STREET, RANDWICK, NSW, 2031

FOR REVIEW

ARCHITECTURAL DRAWINGS - REF 1

DRAWING LIST			
SHEET NUMBER	DRAWING TITLE	REV	SCALE
SCH1-AR-DG-SSD000	COVER SHEET	N	NTS
SCH1-AR-DG-SSD005	SITE PLAN - PROPOSED SSDA AREA	N	1:500
SCH1-AR-DG-SSD010	PROPOSED PLAN - LEVEL B2	M	1:500
SCH1-AR-DG-SSD011	PROPOSED PLAN - LEVEL B1	N	1:250
SCH1-AR-DG-SSD012	PROPOSED PLAN - LEVEL 00	M	1:500
SCH1-AR-DG-SSD030	ELEVATION - SHEET 01	N	1:500
SCH1-AR-DG-SSD032	ELEVATION - SHEET 03	N	1:500
SCH1-AR-DG-SSD033	ELEVATION - SHEET 04	L	1:500
SCH1-AR-DG-SSD037	SECTION - SHEET 03	N	1:500
SCH1-AR-DG-SSD038	SECTION - SHEET 04	L	1:500
SCH1-AR-DG-SSD045	HOSPITAL RD INTERFACE - DETAIL CROSS SECTIONS	A	1:50

N	ISSUED FOR REF1	09/09/22
M	ISSUED FOR MOD1	26/08/22
L	SSDA RTS SUBMISSION	02/08/21
K	ISSUED FOR REVIEW	06/08/21
J	ISSUED FOR REVIEW	26/04/21
I	ISSUED FOR REVIEW	23/03/21
H	ISSUED FOR REVIEW	15/03/21
G	ISSUED FOR REVIEW	11/03/21
F	ISSUED FOR REVIEW	05/03/21
E	ISSUED FOR REVIEW	08/02/20
REV		

CONTRACTOR  
John Holland Group

**JOHN HOLLAND**  
Level 3, 65 Pirrama Road  
Pymont, NSW 2009  
T +61 2 9552 4288  
www.johnholland.com.au

CIVIL / STRUCTURAL  
Meinhardt Bonacci Pty Ltd

**MEINHARDT BONACCI**  
Level 4, 66 Clarence Street  
Sydney NSW 2000  
T +61 2 9699 3088  
info@meinhardt-bonacci.com  
www.meinhardt-bonacci.com

PROJECT MANAGER  
PricewaterhouseCoopers  
**pwc**  
One International Towers Sydney  
Watermans Quay,  
Barangaroo NSW 2000  
T +61 2 8266 0000  
www.pwc.com.au

ARCHITECT  
Billard Leece Partnership Pty Ltd  
Architects & Urban Planners  
Level 6, 72-80 Cooper St  
Surry Hills NSW 2010  
T +61 2 8096 4066  
info@blp.com.au  
www.blp.com.au

CLIENT  
Health Infrastructure  
**NSW GOVERNMENT** | **Health Infrastructure**  
Level 6, 1 Reserve Road  
St Leonards, NSW 2055  
T +61 2 9978 5402  
www.hinfra.health.nsw.gov.au

PROJECT  
Sydney Children's Hospital Stage 1  
and Minderoo Children's  
Comprehensive Cancer Centre

Sheet Name  
**COVER SHEET**

Scale @A1		Date 09/09/22	
Drawn By AV	Checked By BB	Revision N	
Project No 19101		Drawing No <b>SCH1-AR-DG-SSD000</b>	

FOR REVIEW





- RANDWICK HEALTH AND INNOVATION PRECINCT
- INDICATIVE SITE BOUNDARY
- LOT BOUNDARY
- EASEMENT
- EXISTING BUILDINGS
- PROPOSED SCH1/CCCC MID STOREY
- PROPOSED SCH1/CCCC UPPER STORY
- PROPOSED LANDSCAPING - PUBLIC
- PROPOSED HTH - INDICATIVE ONLY

N	ISSUED FOR REF1	09/09/22
M	ISSUED FOR MOD1	26/08/22
L	SSDA RTS SUBMISSION	02/08/21
K	ISSUED FOR REVIEW	06/08/21
J	ISSUED FOR REVIEW	26/04/21
I	ISSUED FOR REVIEW	23/03/21
H	ISSUED FOR REVIEW	15/03/21
G	ISSUED FOR REVIEW	11/03/21
F	ISSUED FOR REVIEW	05/03/21
E	ISSUED FOR REVIEW	08/02/20
REV		



Health  
Infrastructure

**DETERMINED – APPROVAL**

REF Approval No: 06/2023

Date: 10/2/2023

Signed by: *[Signature]*

CONTRACTOR  
John Holland Group

**JOHN HOLLAND**  
Level 3, 65 Pirrama Road  
Pyrmont, NSW 2009  
T +61 2 9552 4288  
www.johnholland.com.au

CIVIL / STRUCTURAL  
Meinhardt Bonacci Pty Ltd

**MEINHARDT BONACCI**  
Level 4, 66 Clarence Street  
Sydney NSW 2000  
T +61 2 9699 3088  
info@meinhardt-bonaccini.com  
www.meinhardt-bonaccini.com

PROJECT MANAGER  
PricewaterhouseCoopers

**pwc**  
One International Towers Sydney  
Watermans Quay,  
Barangaroo NSW 2000  
T +61 2 8266 0000  
www.pwc.com.au

ARCHITECT  
**Billard Leece Partnership Pty Ltd**  
Architects & Urban Planners  
Level 6, 72-80 Cooper St  
Surry Hills NSW 2010  
T +61 2 8096 4066  
info@blp.com.au  
www.blp.com.au

CLIENT  
Health Infrastructure  
Level 6, 1 Reserve Road  
St Leonards, NSW 2055  
T +61 2 9978 5402  
www.hinfra.health.nsw.gov.au

PROJECT  
Sydney Children's Hospital Stage 1  
and Minderoo Children's  
Comprehensive Cancer Centre

Sheet Name  
**SITE PLAN - PROPOSED SSDA AREA**

N  
0 2.5 5 7.5 10 12.5m  
1:250

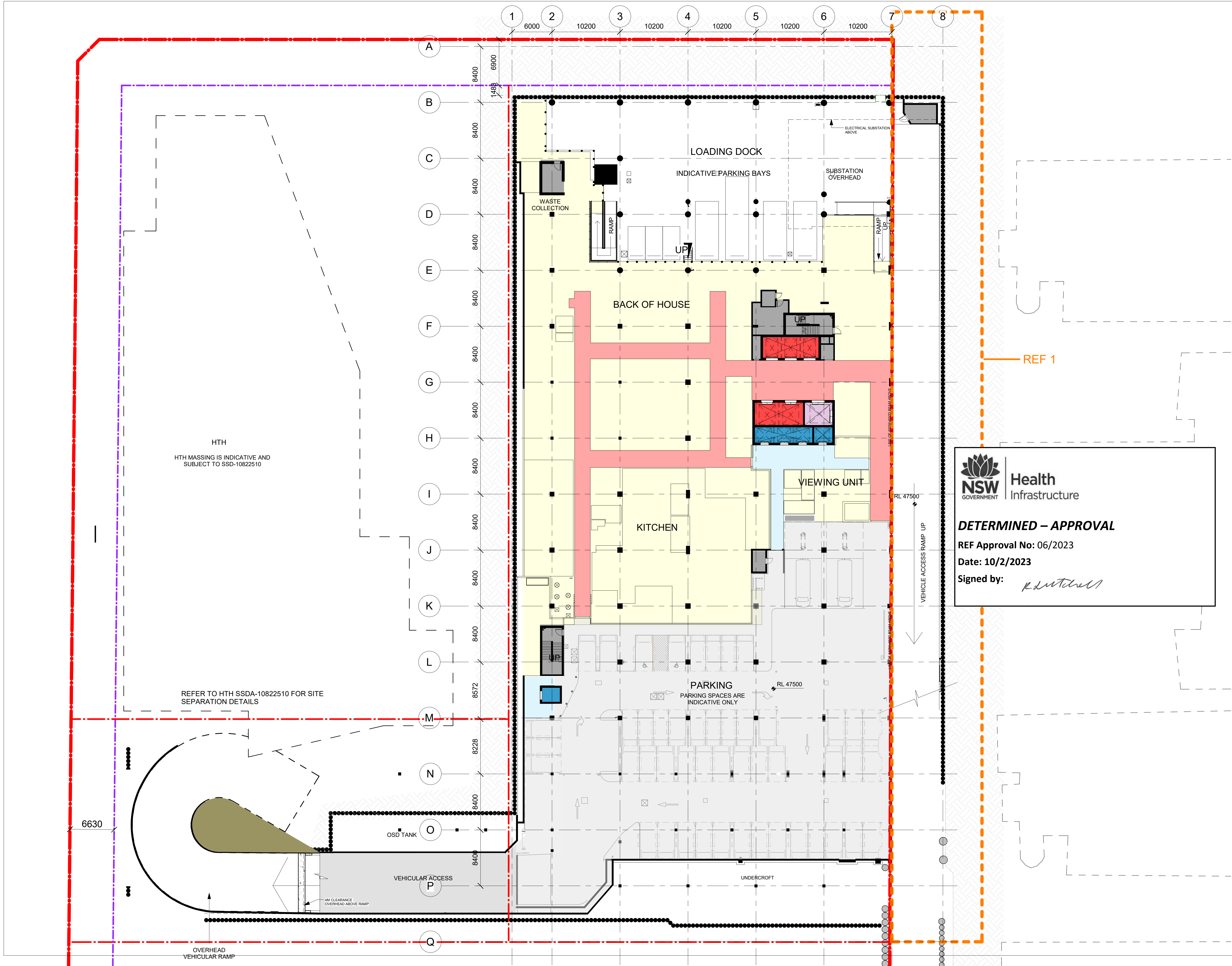
Scale  
1:500@A1  
Date  
09/09/22  
Drawn By  
AV  
Checked By  
BB  
Revision  
N

Project No  
19101  
Drawing No  
**SCH1-AR-DG-SSD005**

FOR REVIEW

9/09/2022 12:20:02 PM  
Autodesk Docs/Sydney Childrens Hospital/SCH-BLP-AR-M3-MS011.rvt





- RANDWICK HEALTH AND INNOVATION PRECINCT
- INDICATIVE SITE BOUNDARY
- LOT BOUNDARY
- EASEMENT
- PROPOSED HTH - INDICATIVE ONLY
- DEPARTMENT
- RETAIL
- PLANT / ENGINEERING
- CARPARK
- TREES - SCH1 / CCCC
- OUTDOOR TERRACE
- RAISED PLANTER BOXERS
- DEEP SOIL LANDSCAPING
- HARD LANDSCAPING
- CIRCULATION - RESTRICTED
- CIRCULATION - PUBLIC
- LIFT - CLINICAL
- LIFT - PUBLIC
- LIFT - GOODS / LABS

M	ISSUED FOR REF1	09/09/22
L	SSDA RTS SUBMISSION	02/09/21
K	ISSUED FOR REVIEW	06/08/21
J	ISSUED FOR REVIEW	26/04/21
I	ISSUED FOR REVIEW	23/03/21
H	ISSUED FOR REVIEW	15/03/21
G	ISSUED FOR REVIEW	11/03/21
F	ISSUED FOR REVIEW	05/03/21
E	ISSUED FOR REVIEW	08/02/20
D	ISSUED FOR REVIEW	22/01/20
REV		



### DETERMINED – APPROVAL

REF Approval No: 06/2023

Date: 10/2/2023

Signed by: *[Signature]*

CONTRACTOR  
John Holland Group

**JOHN HOLLAND**  
Level 3, 65 Pirrama Road  
Pyrmont, NSW 2009  
T +61 2 9552 4288  
www.johnholland.com.au

CIVIL / STRUCTURAL  
Meinhardt Bonacci Pty Ltd

**MEINHARDT BONACCI**  
Level 4, 66 Clarence Street  
Sydney NSW 2000  
T +61 2 9699 3088  
info@meinhardt-bonaccip.com  
www.meinhardt-bonaccip.com

PROJECT MANAGER  
PricewaterhouseCoopers

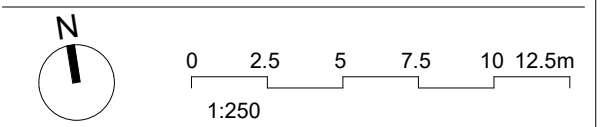
**pwc**  
One International Towers Sydney  
Watermans Quay,  
Barangaroo NSW 2000  
T +61 2 8266 0000  
www.pwc.com.au

ARCHITECT  
**Billard Leece Partnership Pty Ltd**  
Architects & Urban Planners  
Level 6, 72-80 Cooper St  
Surry Hills NSW 2010  
T +61 2 8096 4066  
info@blp.com.au  
www.blp.com.au

CLIENT  
Health Infrastructure  
Level 6, 1 Reserve Road  
St Leonards, NSW 2055  
T +61 2 9978 5402  
www.hinfra.health.nsw.gov.au

PROJECT  
Sydney Children's Hospital Stage 1  
and Minderoo Children's  
Comprehensive Cancer Centre

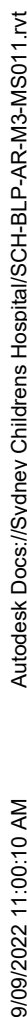
Sheet Name  
**PROPOSED PLAN - LEVEL B2**



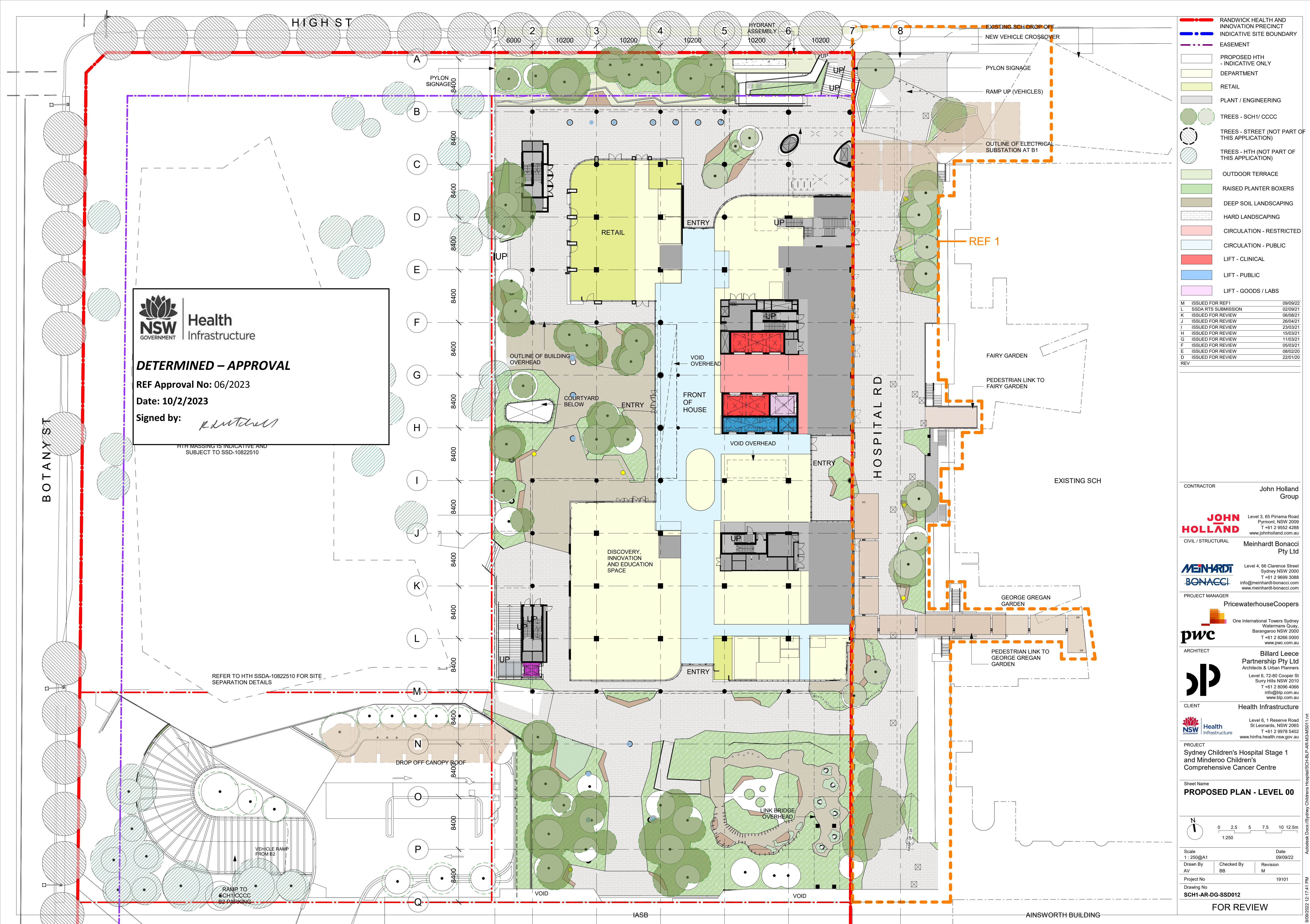
Scale 1 : 250@A1		Date 09/09/22
Drawn By AV	Checked By BB	Revision M
Project No		19101
Drawing No		
SCH1-AR-DG-SSD010		

FOR REVIEW

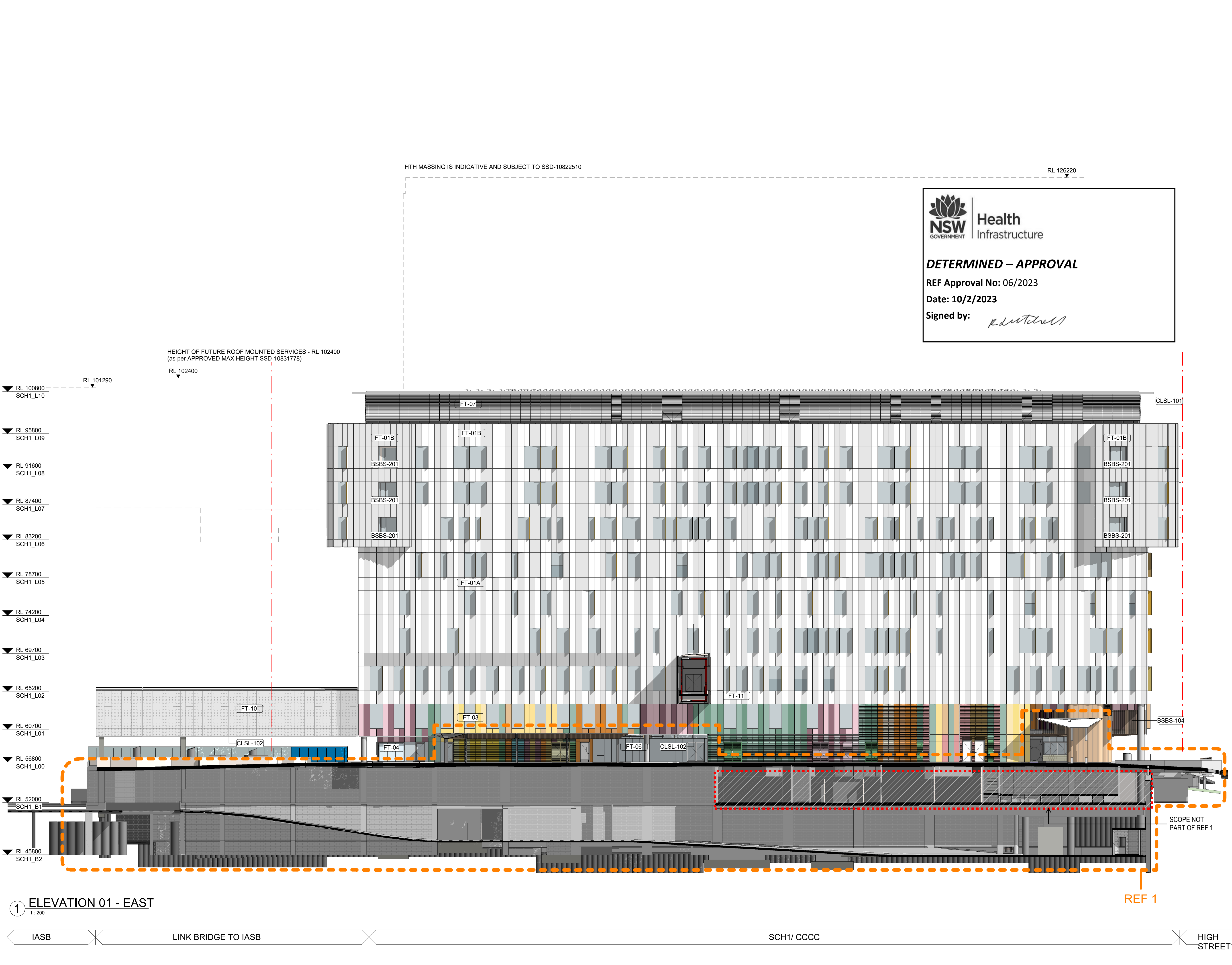












KEY PLAN

LEGEND

- RANDWICK HEALTH AND INNOVATION PRECINCT
- EXISTING GROUND LINE
- EASEMENT LINE

ABBREVIATIONS:

SCH	SYDNEY CHILDREN'S HOSPITAL
CCCC	CHILDREN'S COMPREHENSIVE CANCER CENTRE
HTH	HEALTH TRANSLATION HUB
IASB	INTEGRATED ACUTE SERVICES BUILDING
UNSW	UNIVERSITY OF NEW SOUTH WALES

NOTE:  
DETAILED DESIGN FOR THE SIGNAGE PACKAGE IS SUBJECT TO FURTHER DEVELOPMENT

N	ISSUED FOR REF1	09/09/22
M	ISSUED FOR MOD1	26/08/22
L	SSDA RTS SUBMISSION	02/08/21
K	ISSUED FOR REVIEW	06/08/21
J	ISSUED FOR REVIEW	26/04/21
I	ISSUED FOR REVIEW	23/03/21
H	ISSUED FOR REVIEW	15/03/21
G	ISSUED FOR REVIEW	11/03/21
F	ISSUED FOR REVIEW	05/03/21
E	ISSUED FOR REVIEW	08/02/20
REV		

CONTRACTOR

John Holland Group

**JOHN HOLLAND** Level 3, 65 Pirrama Road  
Pyrmont, NSW 2009  
T +61 2 9552 4288  
www.johnholland.com.au

CIVIL / STRUCTURAL

Meinhardt Bonacci Pty Ltd

Level 4, 66 Clarence Street  
Sydney NSW 2000  
T +61 2 9699 3088  
info@meinhardt-bonacci.com  
www.meinhardt-bonacci.com

PROJECT MANAGER

PricewaterhouseCoopers

**pwc** One International Towers Sydney  
Watermans Quay,  
Barangaroo NSW 2000  
T +61 2 8266 0000  
www.pwc.com.au

ARCHITECT

Billard Leece Partnership Pty Ltd  
Architects & Urban Planners  
Level 6, 72-80 Cooper St  
Surry Hills NSW 2010  
T +61 2 8096 4066  
info@blp.com.au  
www.blp.com.au

CLIENT

Health Infrastructure

Level 6, 1 Reserve Road  
St Leonards, NSW 2055  
T +61 2 9978 5402  
www.hinfra.health.nsw.gov.au

PROJECT

Sydney Children's Hospital Stage 1  
and Minderoo Children's  
Comprehensive Cancer Centre

Sheet Name

**ELEVATION - SHEET 01**

Scale

As indicated@A1

0 2 4 6 8 10m  
1:200

Date

09/09/22

Drawn By	Checked By	Revision
AV	BB	N

Project No

19101

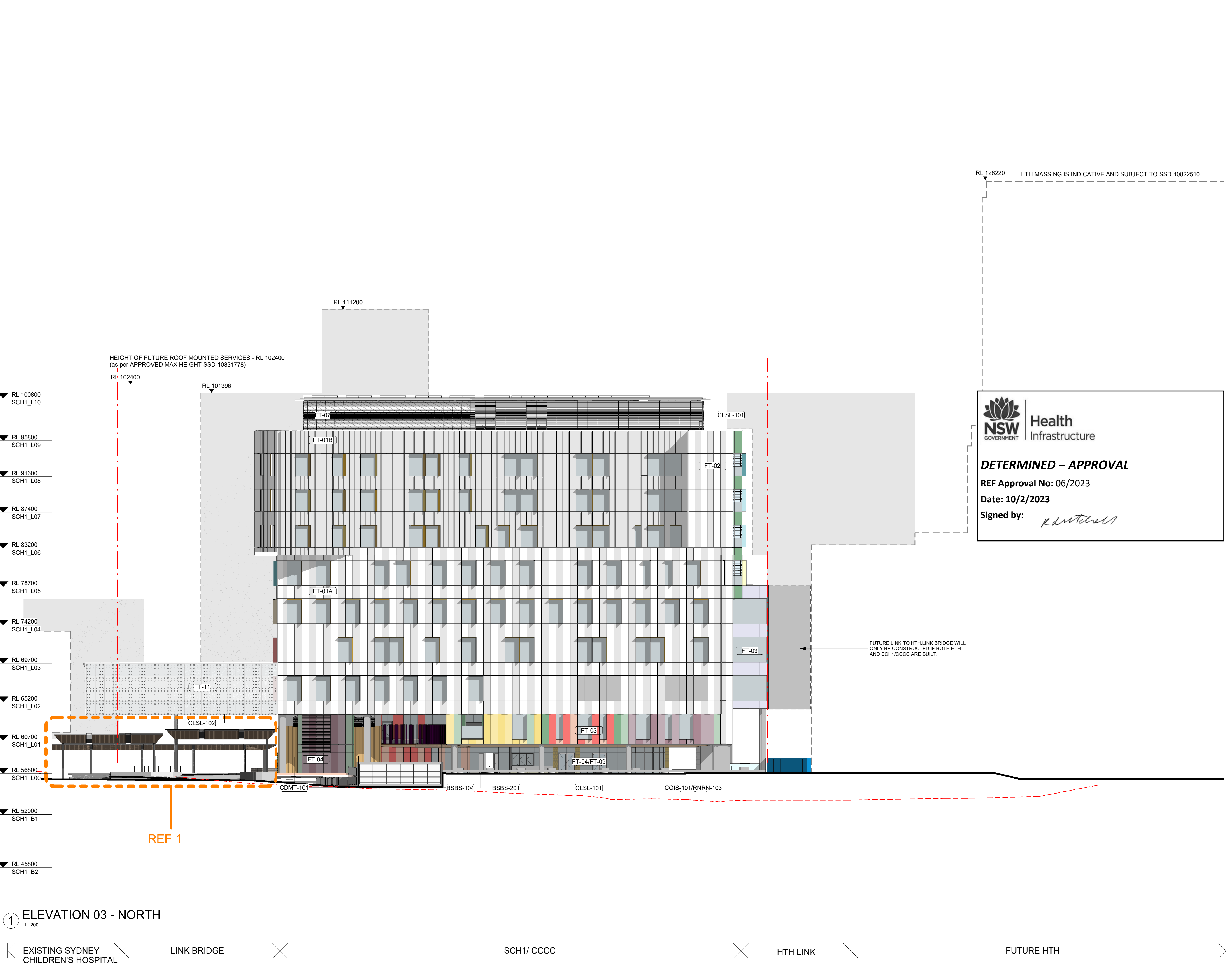
Drawing No

**SCH1-AR-DG-SSD030**

**FOR REVIEW**

① ELEVATION 01 - EAST  
1 : 200





KEY PLAN

LEGEND

- RANDWICK HEALTH AND INNOVATION PRECINCT
- EXISTING GROUND LINE
- EASEMENT LINE

ABBREVIATIONS:

SCH	SYDNEY CHILDREN'S HOSPITAL
CCCC	CHILDREN'S COMPREHENSIVE CANCER CENTRE
HTH	HEALTH TRANSLATION HUB
IASB	INTEGRATED ACUTE SERVICES BUILDING
UNSW	UNIVERSITY OF NEW SOUTH WALES

NOTE:  
DETAILED DESIGN FOR THE SIGNAGE PACKAGE IS SUBJECT TO FURTHER DEVELOPMENT

N	ISSUED FOR REF1	09/09/22
M	ISSUED FOR MOD1	26/08/22
L	SSDA RTS SUBMISSION	02/08/21
K	ISSUED FOR REVIEW	06/08/21
J	ISSUED FOR REVIEW	26/04/21
I	ISSUED FOR REVIEW	23/03/21
H	ISSUED FOR REVIEW	15/03/21
G	ISSUED FOR REVIEW	11/03/21
F	ISSUED FOR REVIEW	05/03/21
E	ISSUED FOR REVIEW	08/02/20
REV		

Health Infrastructure

**DETERMINED – APPROVAL**

REF Approval No: 06/2023

Date: 10/2/2023

Signed by:

CONTRACTOR

John Holland Group

**JOHN HOLLAND** Level 3, 65 Pirrama Road  
Pyrmont, NSW 2009  
T +61 2 9552 4288  
www.johnholland.com.au

CIVIL / STRUCTURAL

Meinhardt Bonacci Pty Ltd

**MEINHARDT BONACCI** Level 4, 66 Clarence Street  
Sydney NSW 2000  
T +61 2 9699 3088  
info@meinhardt-bonaccini.com  
www.meinhardt-bonaccini.com

PROJECT MANAGER

PricewaterhouseCoopers

**pwc** One International Towers Sydney  
Watermans Quay,  
Barangaroo NSW 2000  
T +61 2 8266 0000  
www.pwc.com.au

ARCHITECT

Billard Leece Partnership Pty Ltd  
Architects & Urban Planners  
Level 6, 72-80 Cooper St  
Surry Hills NSW 2010  
T +61 2 8096 4066  
info@blp.com.au  
www.blp.com.au

CLIENT

Health Infrastructure

**NSW Health Infrastructure** Level 6, 1 Reserve Road  
St Leonards, NSW 2055  
T +61 2 9978 5402  
www.hinfra.health.nsw.gov.au

PROJECT

Sydney Children's Hospital Stage 1 and Minderoo Children's Comprehensive Cancer Centre

Sheet Name

**ELEVATION - SHEET 03**

Scale

As indicated@A1

Date

09/09/22

Drawn By	Checked By	Revision
AV	BB	N

Project No

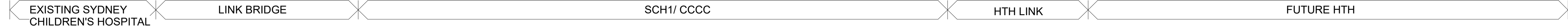
19101

Drawing No

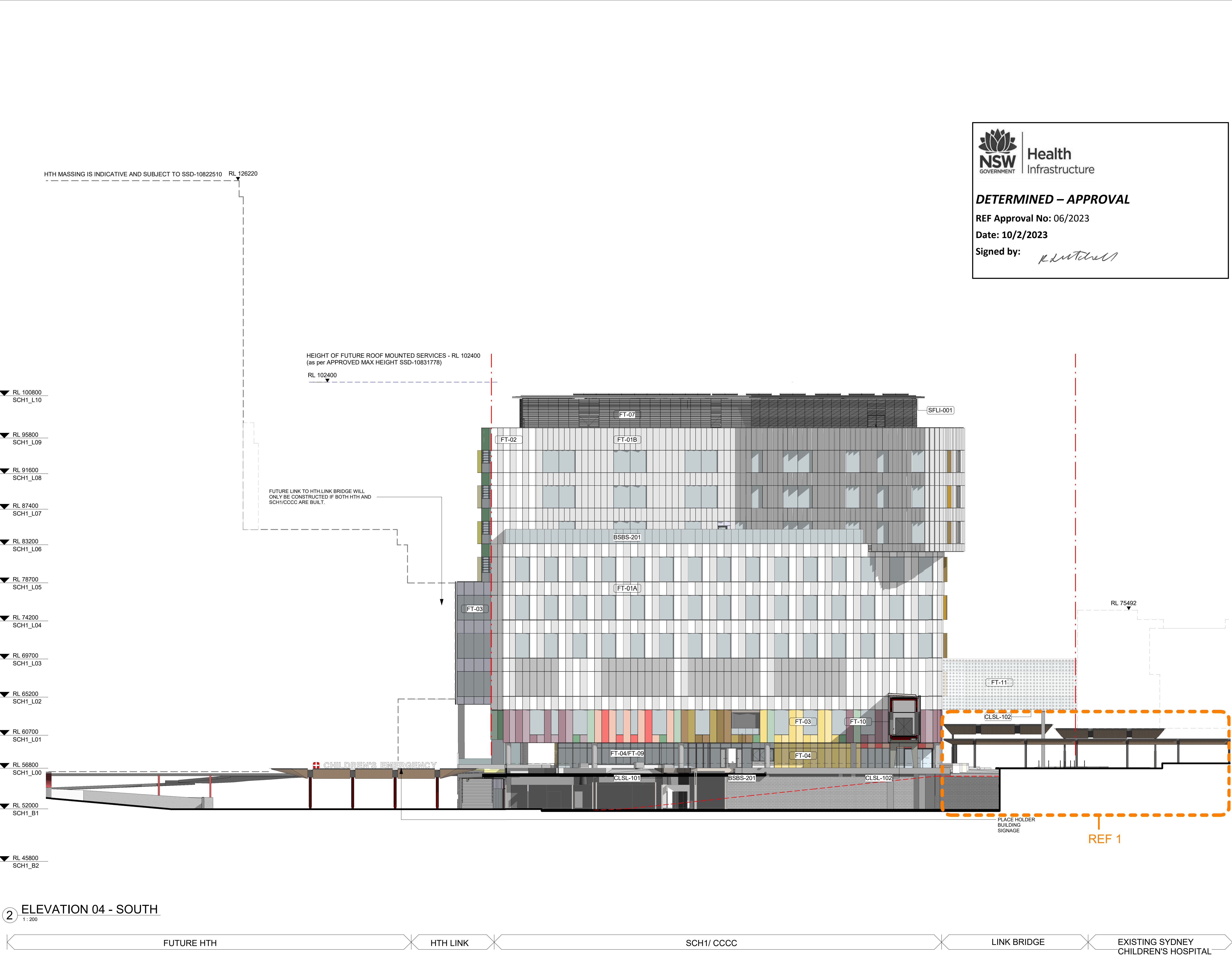
**SCH1-AR-DG-SSD032**

**FOR REVIEW**

1 ELEVATION 03 - NORTH







2 ELEVATION 04 - SOUTH  
1:200



Health  
Infrastructure

DETERMINED – APPROVAL

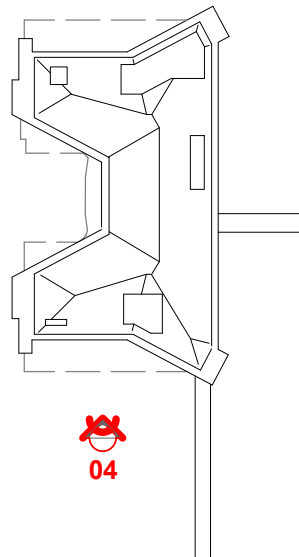
REF Approval No: 06/2023

Date: 10/2/2023

Signed by:

*[Signature]*

KEY PLAN



LEGEND

- RANDWICK HEALTH AND INNOVATION PRECINCT
- EXISTING GROUND LINE
- EASEMENT LINE

ABBREVIATIONS:

SCH	SYDNEY CHILDREN'S HOSPITAL
CCCC	CHILDREN'S COMPREHENSIVE CANCER CENTRE
HTH	HEALTH TRANSLATION HUB
IASB	INTEGRATED ACUTE SERVICES BUILDING
UNSW	UNIVERSITY OF NEW SOUTH WALES

NOTE:

DETAILED DESIGN FOR THE SIGNAGE PACKAGE IS SUBJECT TO FURTHER DEVELOPMENT

L	ISSUED FOR REF1	09/09/22
K	ISSUED FOR MOD1	26/08/22
J	SSDA RTS SUBMISSION	02/08/21
I	ISSUED FOR REVIEW	06/08/21
H	ISSUED FOR REVIEW	26/04/21
G	ISSUED FOR REVIEW	23/03/21
F	ISSUED FOR REVIEW	15/03/21
E	ISSUED FOR REVIEW	11/03/21
D	ISSUED FOR REVIEW	05/03/21
C	ISSUED FOR REVIEW	08/02/20
REV		

CONTRACTOR

John Holland  
Group



Level 3, 65 Pirrama Road  
Pyrmont, NSW 2009  
T +61 2 9552 4288  
www.johnholland.com.au

CIVIL / STRUCTURAL

Meinhardt Bonacci  
Pty Ltd



Level 4, 66 Clarence Street  
Sydney NSW 2000  
T +61 2 9699 3088  
info@meinhardt-bonacc.com  
www.meinhardt-bonacc.com

PROJECT MANAGER

PricewaterhouseCoopers



One International Towers Sydney  
Watermans Quay,  
Barangaroo NSW 2000  
T +61 2 8266 0000  
www.pwc.com.au

ARCHITECT



Billard Leece  
Partnership Pty Ltd  
Architects & Urban Planners  
Level 6, 72-80 Cooper St  
Surry Hills NSW 2010  
T +61 2 8096 4066  
info@blp.com.au  
www.blp.com.au

CLIENT

Health Infrastructure



Level 6, 1 Reserve Road  
St Leonards, NSW 2055  
T +61 2 9978 5402  
www.hinfra.health.nsw.gov.au

PROJECT

Sydney Children's Hospital Stage 1  
and Minderoo Children's  
Comprehensive Cancer Centre

Sheet Name

ELEVATION - SHEET 04



Scale

As indicated@A1

Date

09/09/22

Drawn By

AV

Checked By

BB

Revision

L

Project No

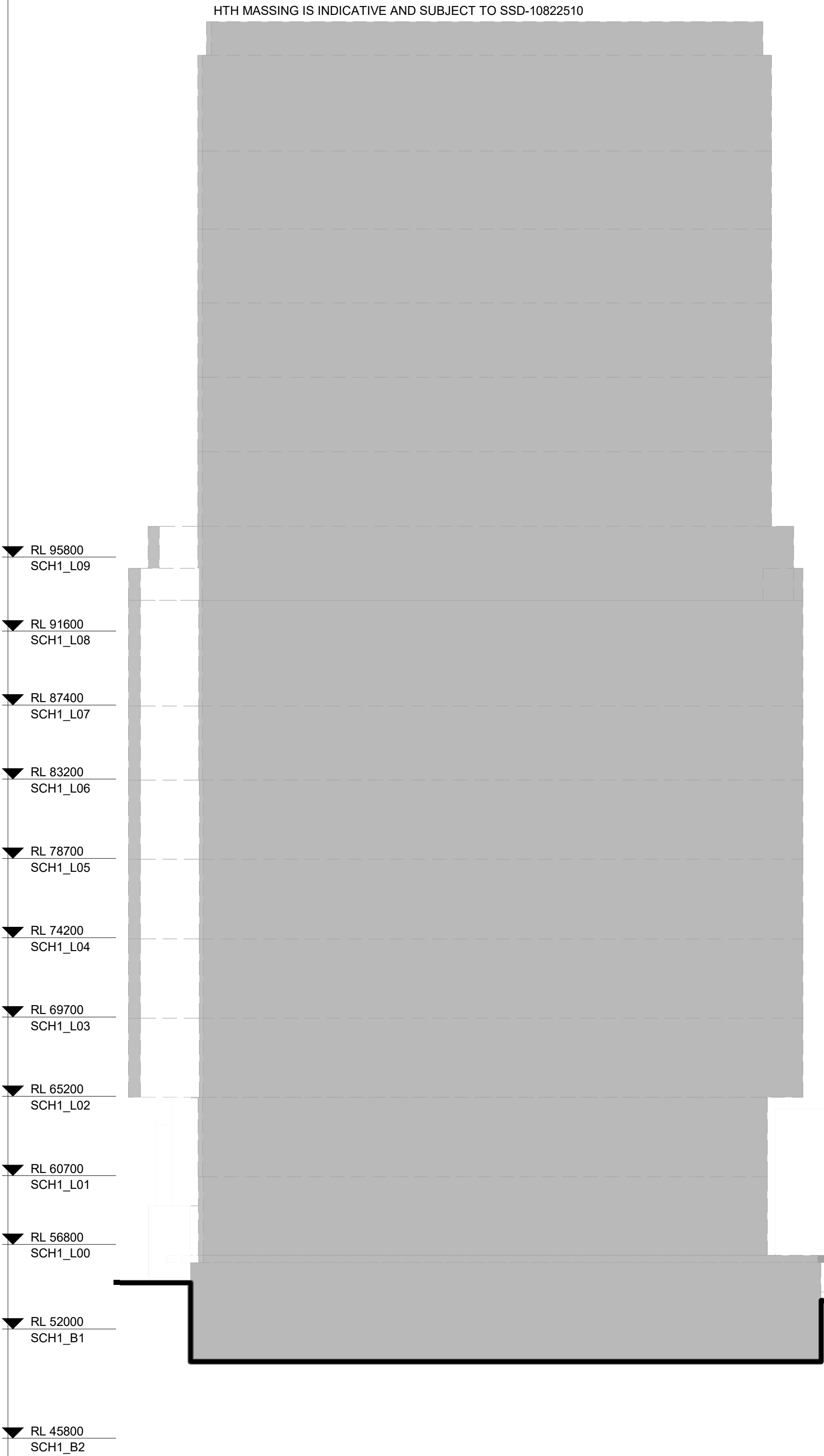
19101

Drawing No

SCH1-AR-DG-SSD033

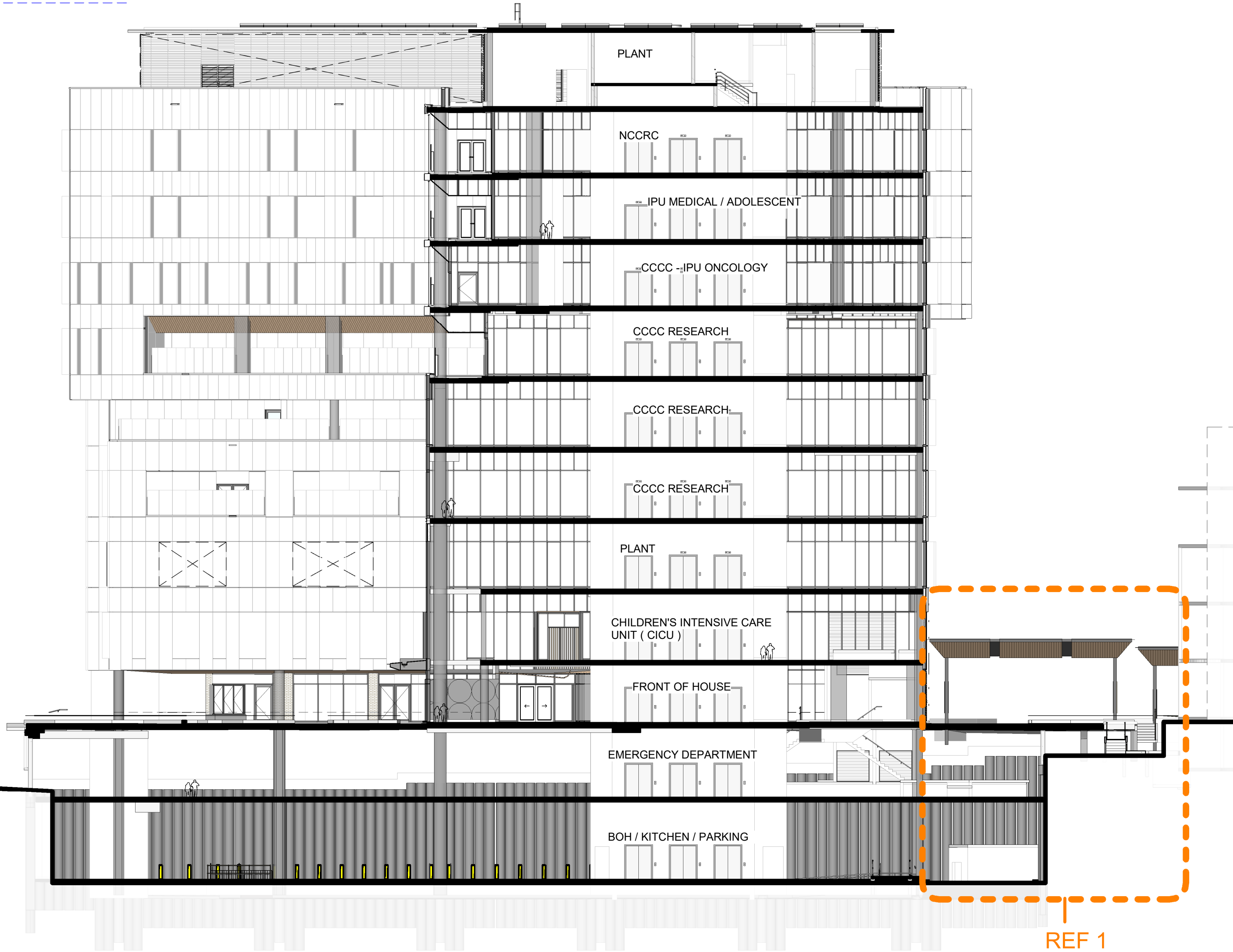
FOR REVIEW





HEIGHT OF FUTURE ROOF MOUNTED SERVICES - RL 102400  
(as per APPROVED MAX HEIGHT SSD-10831778)

RL 102400



1 SECTION 03

1:200



Health  
Infrastructure

**DETERMINED – APPROVAL**

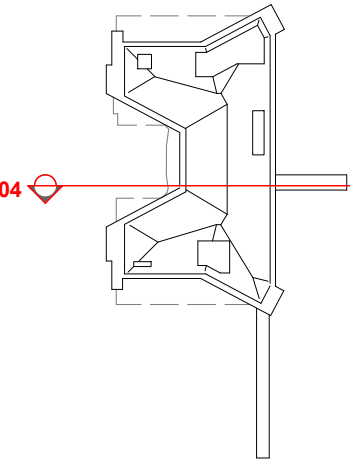
REF Approval No: 06/2023

Date: 10/2/2023

Signed by:

*R. Mitchell*

KEY PLAN



LEGEND

- RANDWICK HEALTH AND INNOVATION PRECINCT
- EXISTING GROUND LINE
- EASEMENT LINE

ABBREVIATIONS:

SCH	SYDNEY CHILDREN'S HOSPITAL
CCCC	CHILDREN'S COMPREHENSIVE CANCER CENTRE
HTH	HEALTH TRANSLATION HUB
IASB	INTEGRATED ACUTE SERVICES BUILDING
UNSW	UNIVERSITY OF NEW SOUTH WALES

N	ISSUED FOR REF1	09/09/22
M	ISSUED FOR MOD1	26/08/22
L	SSDA RTS SUBMISSION	02/08/21
K	ISSUED FOR REVIEW	06/08/21
J	ISSUED FOR REVIEW	26/04/21
I	ISSUED FOR REVIEW	23/03/21
H	ISSUED FOR REVIEW	15/03/21
G	ISSUED FOR REVIEW	11/03/21
F	ISSUED FOR REVIEW	05/03/21
E	ISSUED FOR REVIEW	08/02/20
REV		

CONTRACTOR John Holland Group

**JOHN HOLLAND** Level 3, 65 Pirrama Road  
Pyrmont, NSW 2009  
T +61 2 9552 4288  
www.johnholland.com.au

CIVIL / STRUCTURAL Meinhardt Bonacci Pty Ltd

**MEINHARDT BONACCI** Level 4, 66 Clarence Street  
Sydney NSW 2000  
T +61 2 9699 3088  
info@meinhardt-bonaccini.com  
www.meinhardt-bonaccini.com

PROJECT MANAGER PricewaterhouseCoopers

**pwc** One International Towers Sydney  
Watermans Quay,  
Barangaroo NSW 2000  
T +61 2 8266 0000  
www.pwc.com.au

ARCHITECT **Billard Leece Partnership Pty Ltd**  
Architects & Urban Planners  
Level 6, 72-80 Cooper St  
Surry Hills NSW 2010  
T +61 2 8096 4066  
info@blp.com.au  
www.blp.com.au

CLIENT Health Infrastructure  
Level 6, 1 Reserve Road  
St Leonards, NSW 2055  
T +61 2 9978 5402  
www.hinfra.health.nsw.gov.au

PROJECT Sydney Children's Hospital Stage 1  
and Minderoo Children's  
Comprehensive Cancer Centre

Sheet Name  
**SECTION - SHEET 03**

0 2 4 6 8 10m  
1:200

Scale As indicated@A1 Date 09/09/22

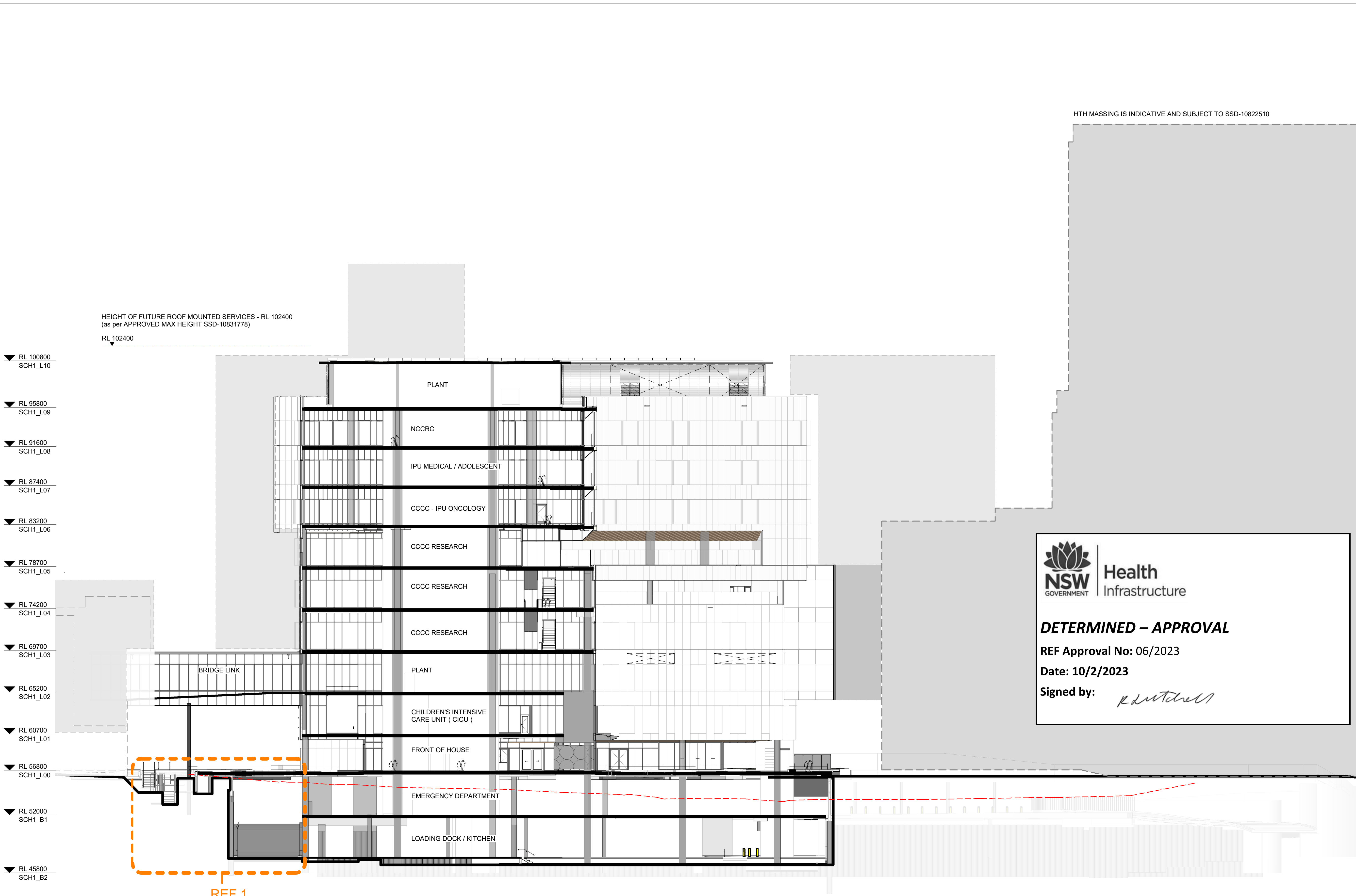
Drawn By	Checked By	Revision
AV	BB	N

Project No 19101

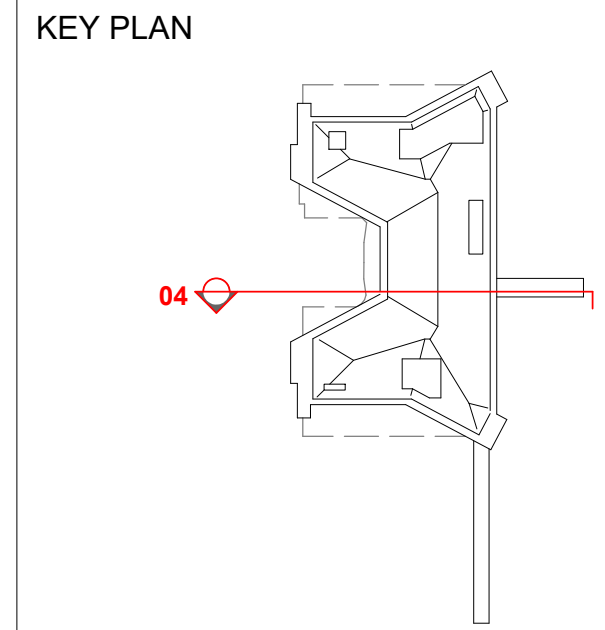
Drawing No  
**SCH1-AR-DG-SSD037**

**FOR REVIEW**





1 SECTION 04  
1:200



- LEGEND
- RANDWICK HEALTH AND INNOVATION PRECINCT
  - EXISTING GROUND LINE
  - EASEMENT LINE

ABBREVIATIONS:

SCH	SYDNEY CHILDREN'S HOSPITAL
CCCC	CHILDREN'S COMPREHENSIVE CANCER CENTRE
HTH	HEALTH TRANSLATION HUB
IASB	INTEGRATED ACUTE SERVICES BUILDING
UNSW	UNIVERSITY OF NEW SOUTH WALES

L	ISSUED FOR REF1	09/09/22
K	ISSUED FOR MOD1	26/08/22
J	SSDA RTS SUBMISSION	02/08/21
I	ISSUED FOR REVIEW	06/08/21
H	ISSUED FOR REVIEW	26/04/21
G	ISSUED FOR REVIEW	23/03/21
F	ISSUED FOR REVIEW	15/03/21
E	ISSUED FOR REVIEW	11/03/21
D	ISSUED FOR REVIEW	05/03/21
C	ISSUED FOR REVIEW	08/02/20
REV		






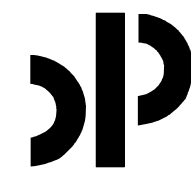

Health  
Infrastructure

**DETERMINED – APPROVAL**

REF Approval No: 06/2023

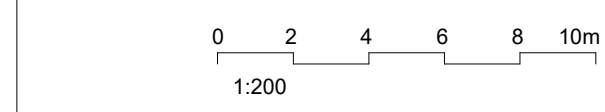
Date: 10/2/2023

Signed by: *R. Mitchell*

CONTRACTOR	John Holland Group
	Level 3, 65 Pirrama Road Pyrmont, NSW 2009 T +61 2 9552 4288 www.johnholland.com.au
CIVIL / STRUCTURAL	Meinhardt Bonacci Pty Ltd
	Level 4, 66 Clarence Street Sydney NSW 2000 T +61 2 9699 3088 info@meinhardt-bonacci.com www.meinhardt-bonacci.com
PROJECT MANAGER	PricewaterhouseCoopers
	One International Towers Sydney Watermans Quay, Barangaroo NSW 2000 T +61 2 8266 0000 www.pwc.com.au
ARCHITECT	Billard Leece Partnership Pty Ltd Architects & Urban Planners
	Level 6, 72-80 Cooper St Surry Hills NSW 2010 T +61 2 8096 4066 info@blp.com.au www.blp.com.au
CLIENT	Health Infrastructure
	Level 6, 1 Reserve Road St Leonards, NSW 2055 T +61 2 9978 5402 www.hinfra.health.nsw.gov.au

PROJECT  
Sydney Children's Hospital Stage 1  
and Mindereroo Children's  
Comprehensive Cancer Centre

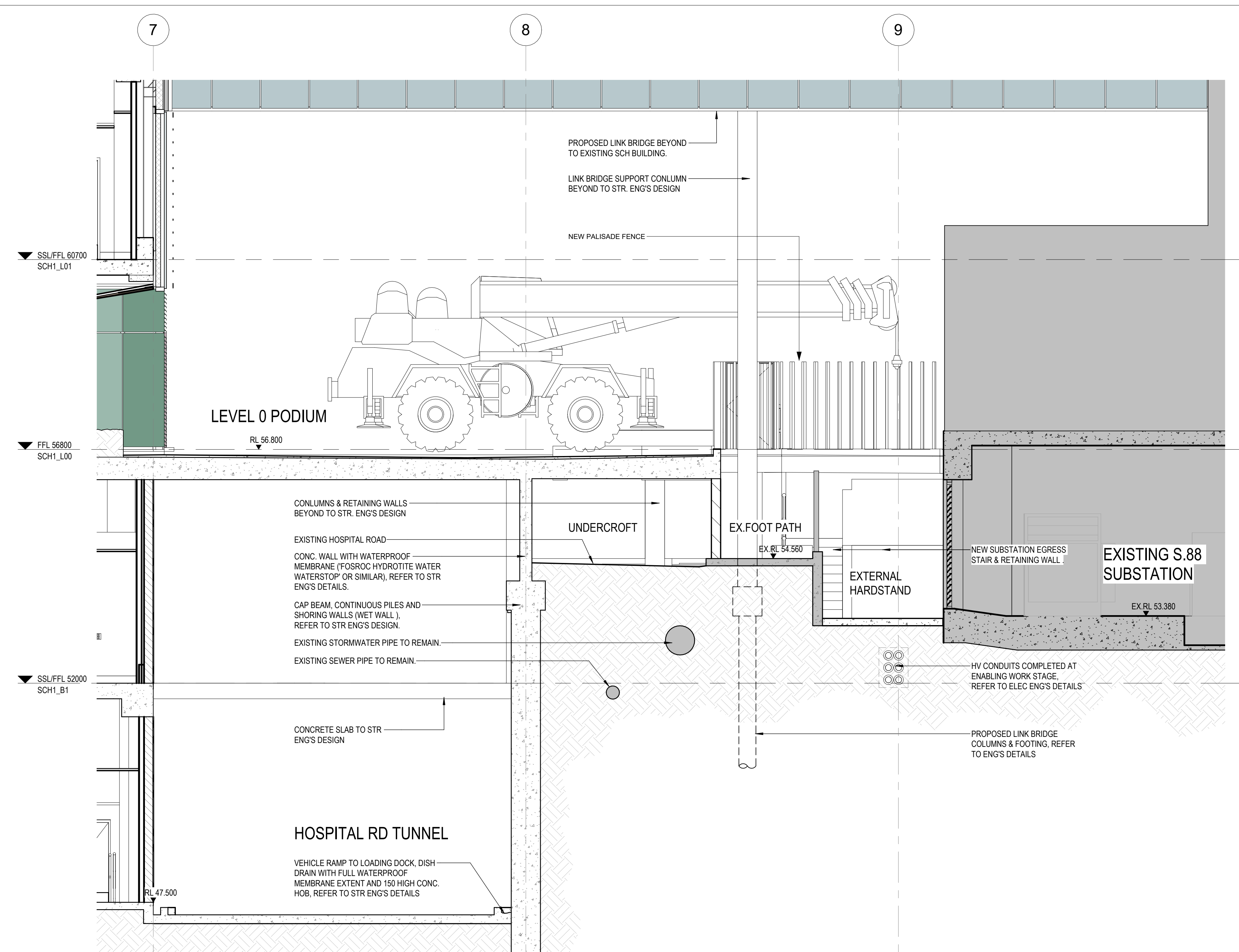
Sheet Name  
**SECTION - SHEET 04**



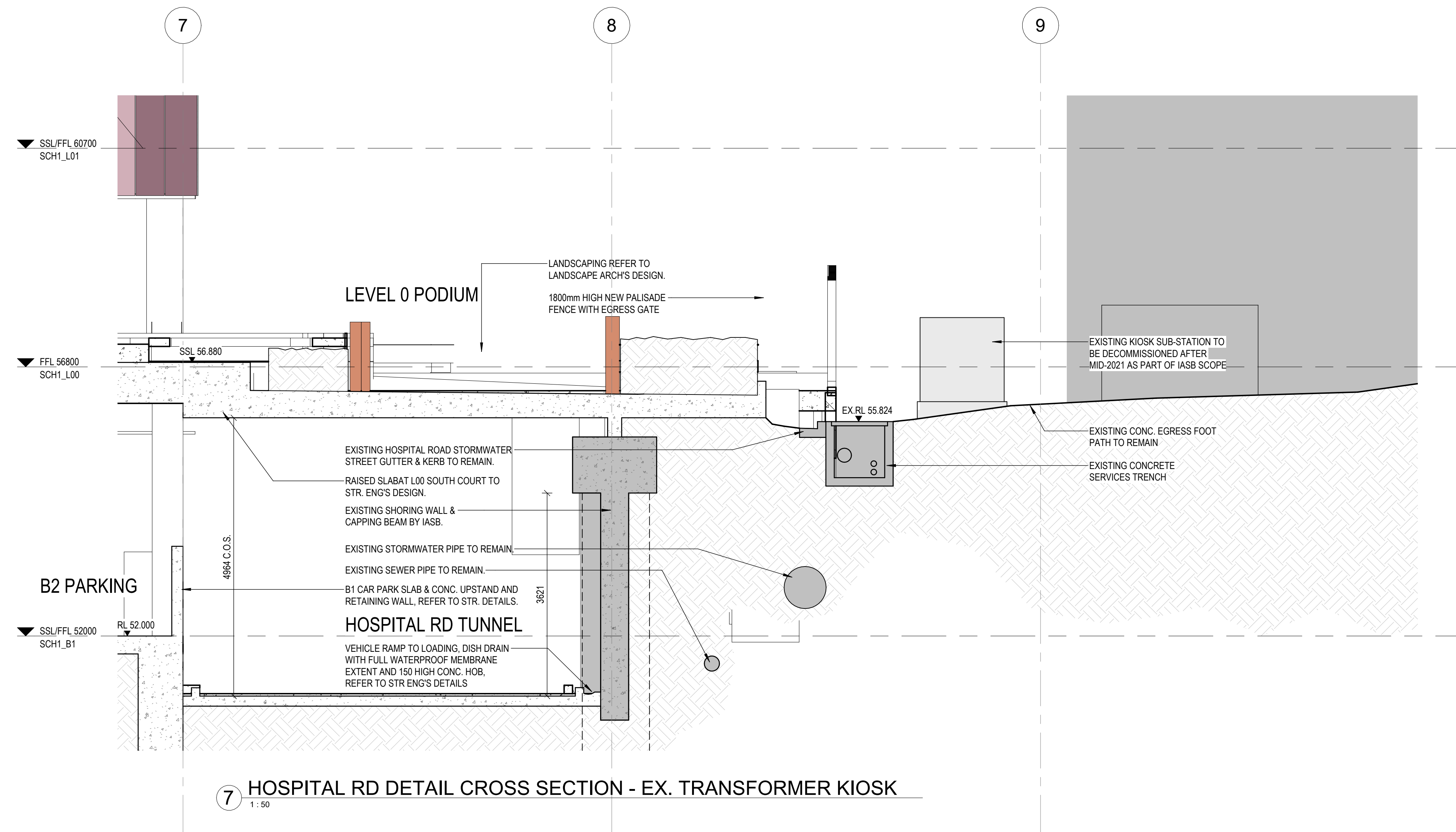
Scale		Date
As indicated@A1		09/09/22
Drawn By	Checked By	Revision
AV	BB	L
Project No		19101
Drawing No		
SCH1-AR-DG-SSD038		

FOR REVIEW

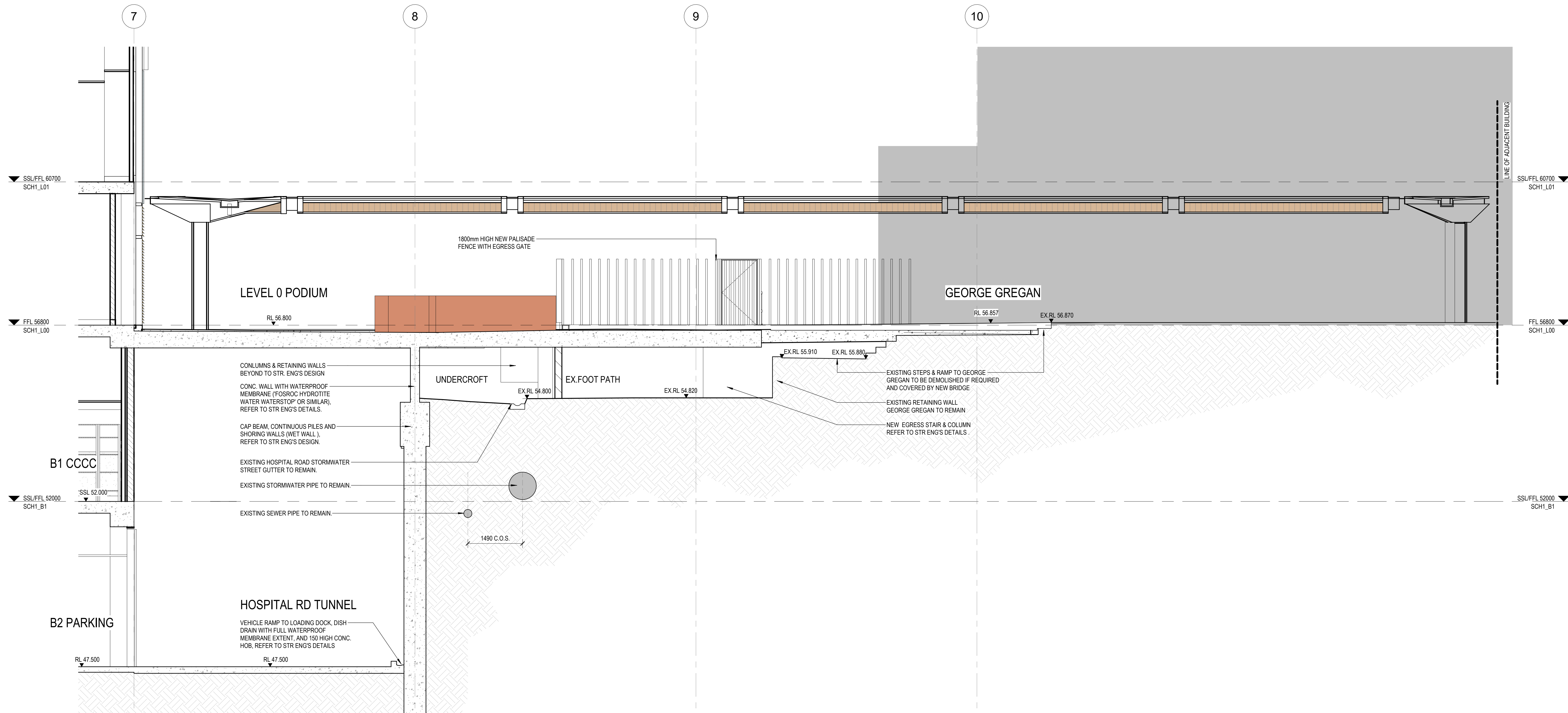




5 HOSPITAL RD DETAIL CROSS SECTION - S88 SUBSTATION



7 HOSPITAL RD DETAIL CROSS SECTION - EX. TRANSFORMER KIOSK



6 HOSPITAL RD DETAIL CROSS SECTION - GEORGE GREGAN BRIDGE

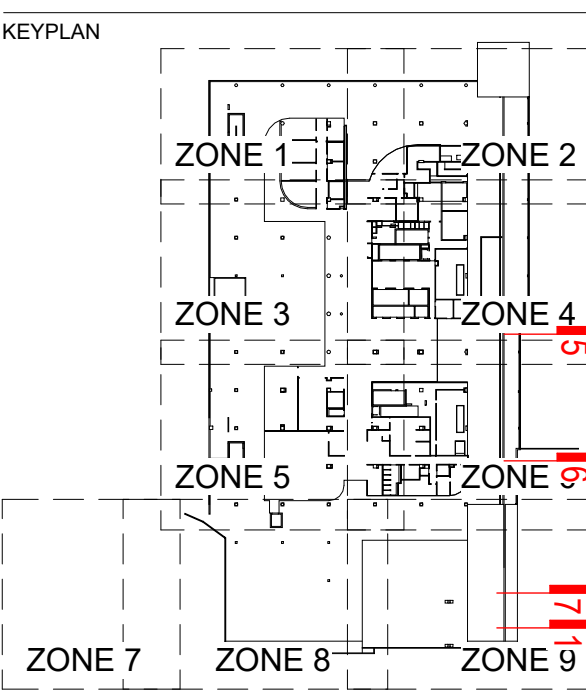
**NSW** GOVERNMENT | **Health** Infrastructure

**DETERMINED – APPROVAL**

REF Approval No: 06/2023

Date: 10/2/2023

Signed by: *[Signature]*



ISSUED FOR REF1	09/09/22
REV	

CONTRACTOR John Holland Group

**JOHN HOLLAND** Level 3, 65 Pirrama Road  
Pyrmont NSW 2009  
T +61 2 9552 4288  
www.johnholland.com.au

CIVIL / STRUCTURAL Meinhardt Bonacci Pty Ltd

**MEINHARDT BONACCI** Level 4, 66 Clarence Street  
Sydney NSW 2000  
T +61 2 9699 3088  
info@meinhardt-bonacc.com  
www.meinhardt-bonacc.com

PROJECT MANAGER PricewaterhouseCoopers

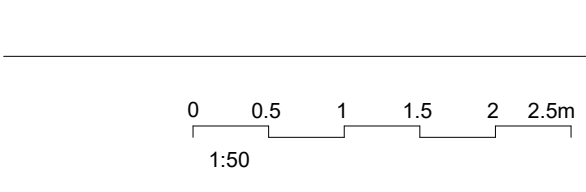
**pwc** One International Towers Sydney  
Watsons Bay, Victoria 3938  
T +61 2 8266 0000  
www.pwc.com.au

ARCHITECT **Billard Leece Partnership Pty Ltd**  
Architects & Urban Planners  
Level 6, 72-80 Cooper St  
Sydney NSW 2010  
T +61 2 8096 4066  
info@billard-leece.com.au  
www.bl.com.au

CLIENT **Health Infrastructure**  
1 Reserve Road  
St Leonards, NSW 2065  
T +61 2 9578 5402  
www.health.nsw.gov.au

PROJECT Sydney Children's Hospital Stage 1 and Minderoo Children's Comprehensive Cancer Centre

Street Name: **HOSPITAL RD INTERFACE - DETAIL CROSS SECTIONS**



Scale: @A0 Date: 09/09/22  
Drawn By: Author Checked By: Checker Revision: A  
Project No: 19101  
Drawing No: **SCH1-AR-DG-SSD045**

FOR REVIEW